

Automatic integration of plagiarism tools and SharePointLMS

In SharePointLMS you can choose between three anti-plagiarism systems: Ephorus, Turnitin and Urkund.

The tool you want to use is selected when SharePointLMS is setup.

1. Enter the **Central Administration** section
2. Select **Application Management** -> **LMS** -> **Global Features**
3. Select **Yes** for the **Enable Plagiarism Control** option. Select a necessary service and specify a key you received with the corresponding software license agreement

Global features

Modify list of features that can be used within all Organizations

Web Application: **http://win2k3stden:14070/**

Location of Help Files ex: http://yourserver/help Leave this field blank to use local help files	URL: <input type="text" value="http://win2k3stden:46055/sites/akc/Dc"/> Allow override this option? <input type="radio"/> Yes <input checked="" type="radio"/> No
Setup plagiarism checking service	Enable Plagiarism Control? <input checked="" type="radio"/> Yes <input type="radio"/> No Service <input type="text" value="Ephorus"/> Key <input type="text" value="Ephorus"/> <input type="text" value="Turnitin"/> <input type="text" value="Urkund"/>
Database settings Database Server <input type="text" value="WIN2K3STDEN\OfficeServers"/> Database Name <input type="text"/> Database authentication <input type="radio"/> Windows authentication (recommended) <input checked="" type="radio"/> SQL authentication Account <input type="text"/> Password <input type="text"/> Allow override this option? <input type="radio"/> Yes <input checked="" type="radio"/> No	

After configuring the access info of the tool, SharePointLMS provides automatic plagiarism control of uploaded documents from Assignments or manually uploaded documents.

Select assignments that should be checked for plagiarism

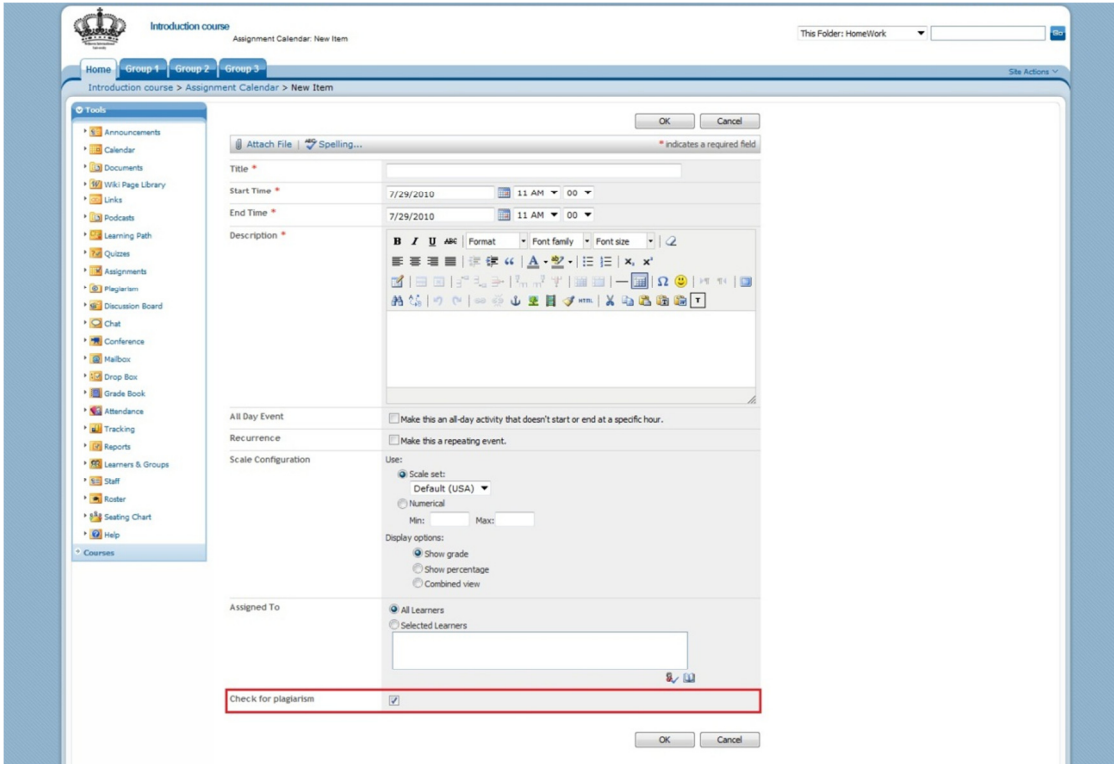


Figure 1: Check mark if the assignments returned by learners should be checked for plagiarism

Plagiarism control is selected when assignments are created. All you have to do is to check mark if they want the assignments checked and everything else will be automatic. It will only be the result the teacher has to review.

When learners return their assignments, all documents are collected in the Plagiarism Course Tool, where the teacher can see the status and details of each document.

Plagiarism tool: View assignments status

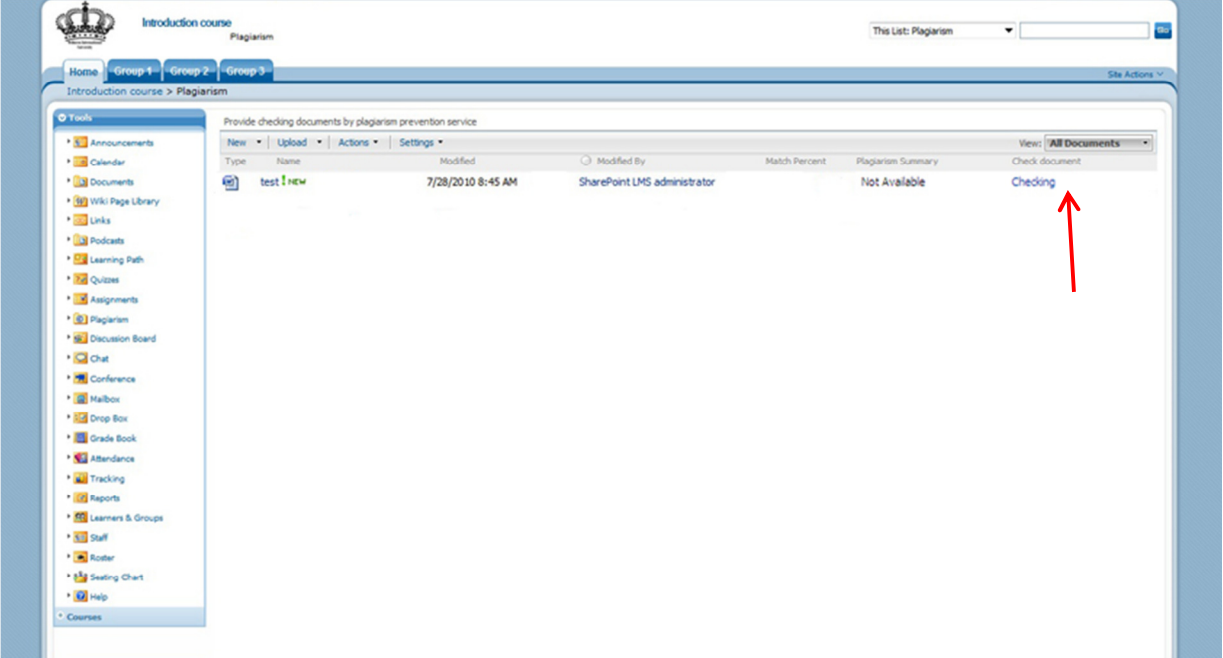


Figure 2: Showing one uploaded document being checked and not available yet.

Assignments returned from learners will all go into the Plagiarism course tool which is only visible for the teacher. The teacher can follow the status of the document that shows when the check for plagiarism is complete. Figure 2 shows a document returned from a learner that is being processed by the plagiarism control and therefore a report is not yet available.

Plagiarism tool: Checked documents

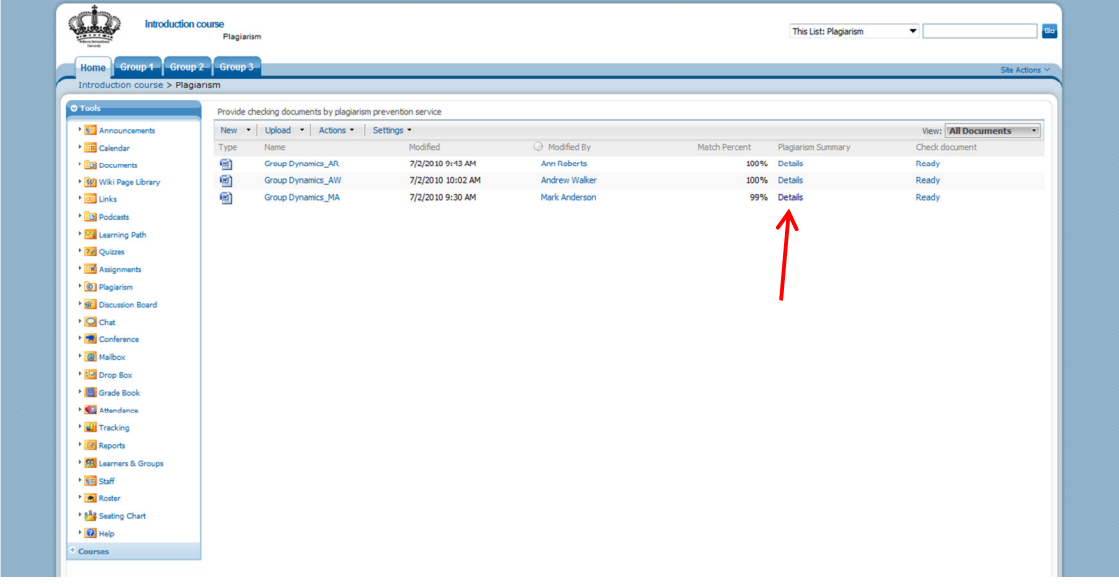


Figure 3: Document has been checked by one of the plagiarism tools and Plagiarism Summary has changed to Details.

View plagiarism reports

When documents have been checked and returned by one of our plagiarism integration partners, a report can be viewed in SharePointLMS. The status of the documents has changed from “Checking” to “Details”. When clicking on Details a report will open in a new window. This is the report returned from one of the anti-plagiarism systems.

For more details about each Plagiarism prevention system, visit our website www.elearningforce.com.