

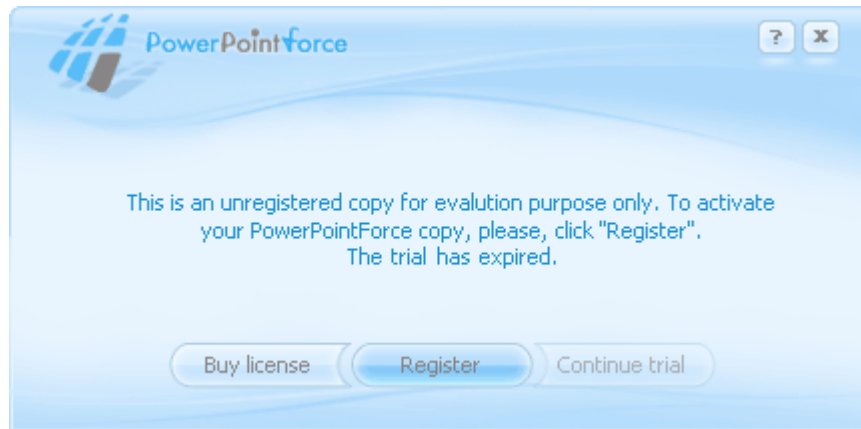


Instructions for Your
POWERPOINTFORCE II
Registration



After you have successfully completed the purchase, please register your product. To do this you have to pass through the following simple steps:

1. Launch your MS PowerPoint. PowerPointForce dialog box will automatically appear. If not, find the PowerPointForce tab (for MS PowerPoint 2007 it is in "Add-ins" menu), then select "Register" in the dialog box.



A new "Registration" dialog box will appear. Select the first option to apply for the license.



Click "Next" to continue. "Apply for the license" dialog window will appear. Fill in the registration information and click "Send request" button to send it to ElearningForce Support Team.



The dialog box is titled "Apply for the license" and contains the following elements:

- Logo and title: PowerPointforce
- Instructions:
 1. Fill in your details.
 2. Press "Send request" button to send us your unique initial code.
- Form fields:
 - User Name:
 - Company:
 - E-mail:
 - A large empty rectangular box for additional information.
- Buttons: "Prev" (disabled), "Cancel" (disabled), and "Send request" (active).

Note: To complete the verification procedure in the field "User Name" you should use the exact username used to purchase a PowerPointForce license.

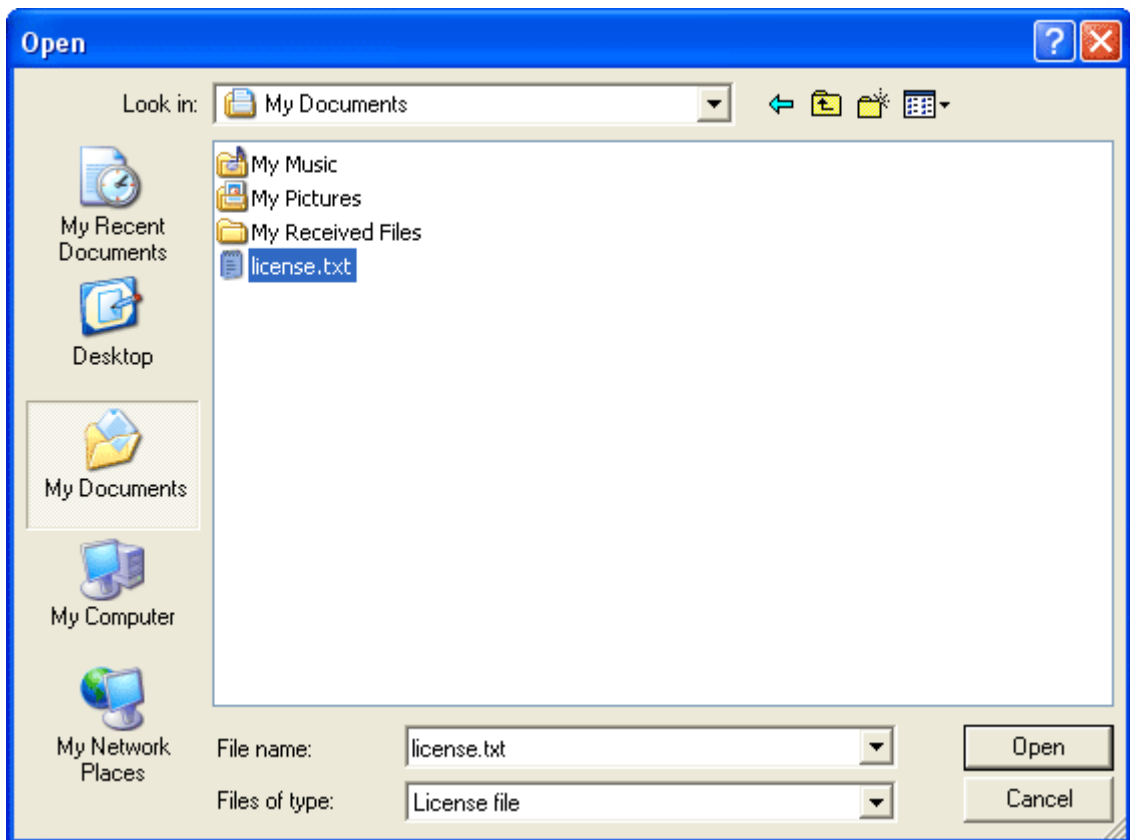
2. Within 1 business day you will receive an Email with a license file.
3. In the Registration dialog box select the second option to activate your PowerPointForce.



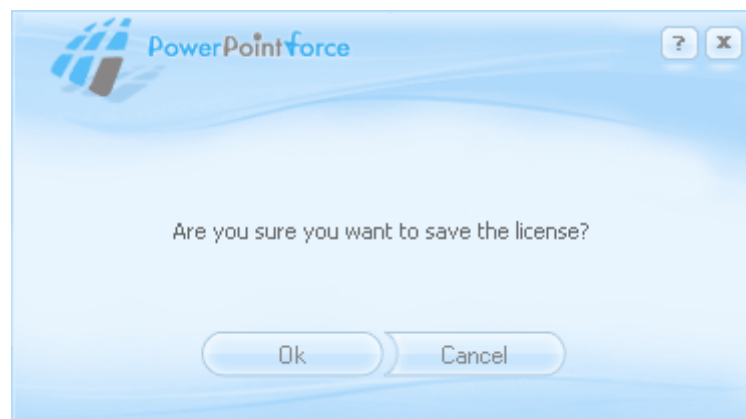
The dialog box is titled "Registration" and contains the following elements:

- Logo and title: PowerPointforce
- Radio button options:
 - I have paid and want to apply for the license**
Choose this option to send your unique initial license request to support team. The product license will be mailed shortly. The purchase must be processed before this step.
 - I have received the license and want to activate PowerPointForce**
Choose this option after you receive the license from our support team.
- Buttons: "Cancel" (disabled) and "Next" (active).

Click "Next" to continue. In the appearing window find and select the license.txt file you have received.



Click "Open". The following dialog box will appear:



Click "Ok" to activate your PowerPointForce II.

4. Enjoy your full product version.

Some other links, which could be helpful for you:

<http://www.elearningforce.biz/e-learning-software/PowerPointForce/features.html> -

Powerful features of our product produce professional results!

<http://www.elearningforce.biz/e-learning-software/PowerPointForce/demos-and-samples.html> -

See our samples and examples created with PowerPointForce in just a few minutes.

<http://www.elearningforce.biz/e-learning-software/PowerPointForce/system-requirements.html> -

Problems installing PowerPointForce? Check the system requirements!

<http://www.elearningforce.biz/e-learning-software/PowerPointForce/prices-and-support.html> -

Here you can find prices, payment methods descriptions and support information.

<http://www.elearningforce.biz/manuals/powerpointforce2/index.html> -

If you have any other questions please check out our online help.

ElearningForce Support Team.