



Instructions for Your

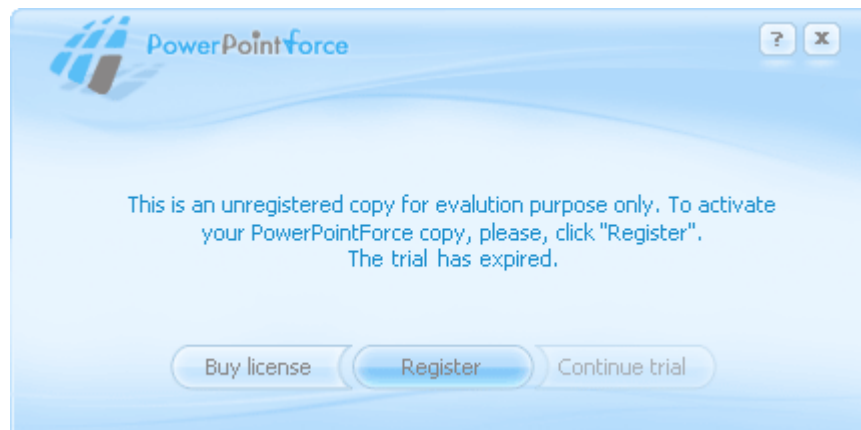
POWERPOINTFORCE 3.0

Registration



After you have successfully completed the purchase, please register your product. To do this you have to pass through the following simple steps:

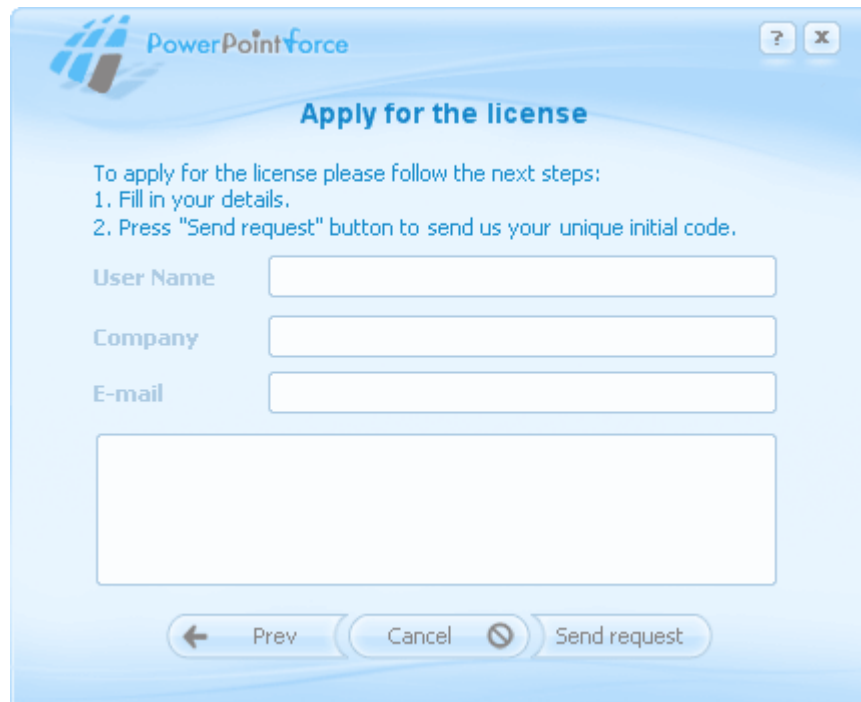
1. Launch your Microsoft PowerPoint. PowerPointForce dialog box will automatically appear. If not, find it on the **PowerPointForce** tab (for Microsoft PowerPoint 2007 on the **Add-ins** menu).
2. In the open dialog box, click **Register**:



3. In the appeared **Registration** dialog box, select the first option to **apply for the license**:



4. Click **Next** to continue.
5. In the appeared dialog box, complete the registration information:



PowerPointforce

Apply for the license

To apply for the license please follow the next steps:
1. Fill in your details.
2. Press "Send request" button to send us your unique initial code.

User Name

Company

E-mail

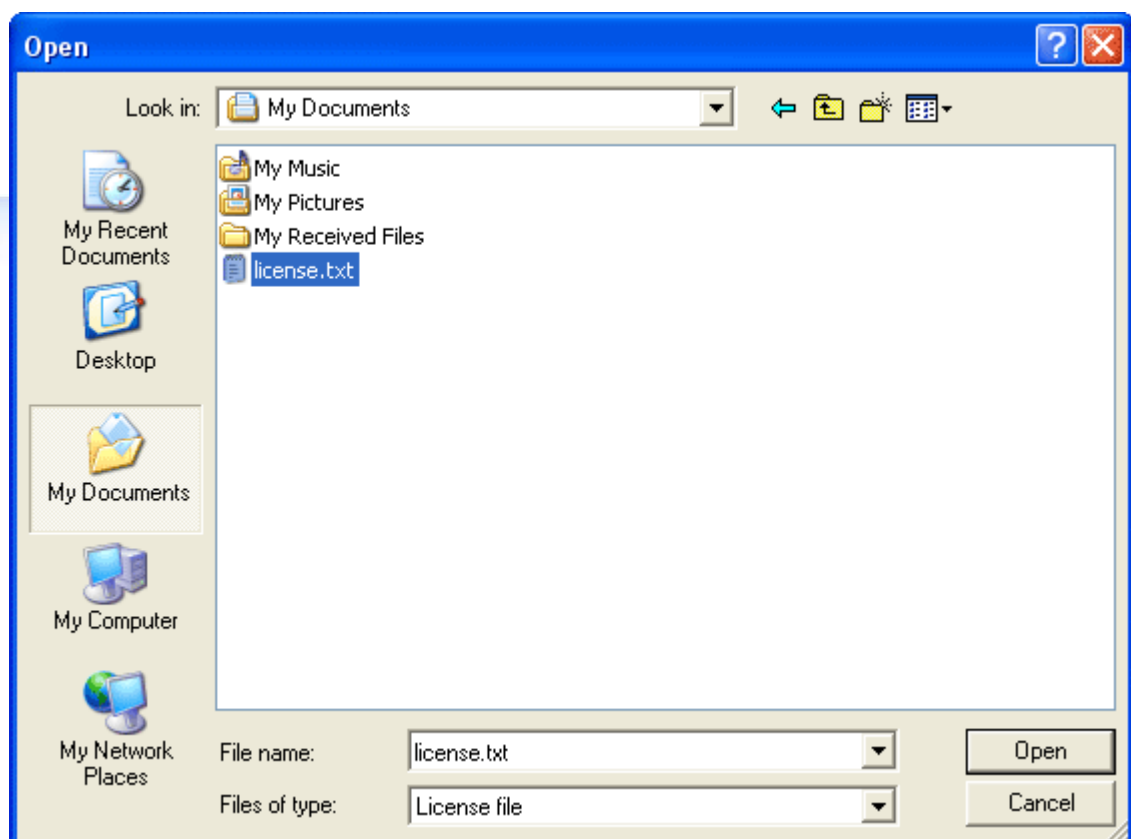
← Prev Cancel Send request

NOTE: To complete the verification procedure in the **User Name** field, type the **exact username** used for purchasing of a Microsoft PowerPoint license.

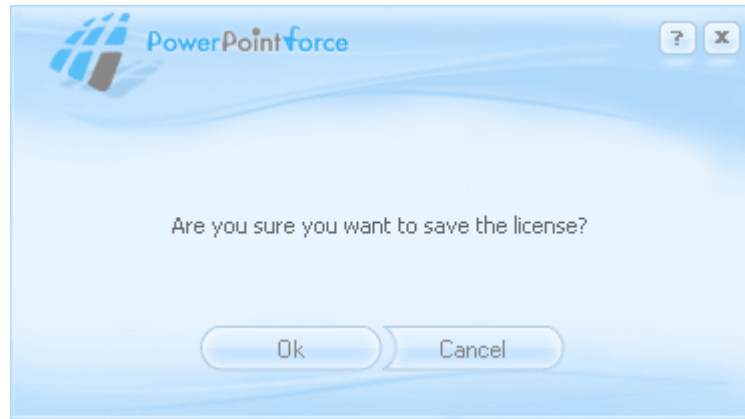
6. Click **Send request** to send your application to ElearningForce Support Team. Within 1 business day you will receive an Email with a license file.
7. In the **Registration** dialog box, select the second option to activate your PowerPointForce:



8. Click **Next** to continue.
9. In the appearing window, find and select the *license.txt* file you have received.



10. Click **Open**.
11. In the appeared dialog box, click **OK** to activate your PowerPointForce:



12. Enjoy your full product version!

Some other links which can be helpful to you:

Have any problems when installing PowerPointForce 3 or any other questions?

Check our online help covering system requirements and all the product features:

<http://www.elearningforce.com/Documents/PowerPointForce/Manual/Published3.0/index.html>

Feel free to request support at:

http://www.sharepointlms.com/helpdesk/ticket_submit.php

ElearningForce Support Team